

INSTRUCTIONS OF MAGNETIC FILTER FOR BOILER

DESCRIPTION



The filter unit is used to remove the harmful contaminants in water in central heating systems, especially sand and rust particles.

It helps to protect the water pump, valves and other pipelines of the heating system.

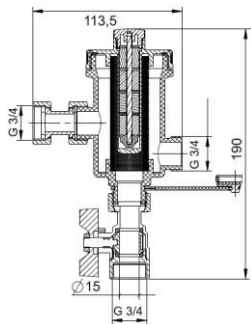
The special design of the filter unit can be installed horizontally or vertically.

Also block heat exchangers, radiator tips or pipes, resulting in lower system separator.

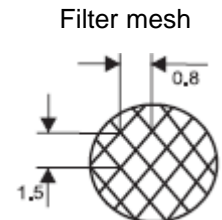
It allows excellent filtration and deposition of impurities in the filter tank.

Removal of impurities can occur during normal operation of the installation.

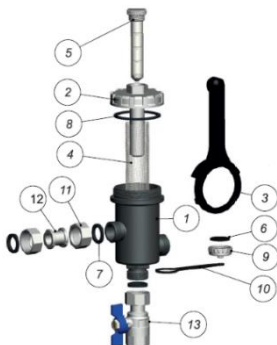
TECHNICAL SPECIFICATIONS



- **Body:** Glass fiber reinforced nylon
- **Filter mesh:** AISI 304 Stainless Steel
- **Neodymium magnet:** 9000 G
- **Temperature range (min-max):** 0-90 °C
- **Max input pressure:** 6 bar
- **Max Flow:** 1.5 bar
- **Connection:** 3/4" G x 3/4" G x 3/4" G
- **Seal:** EPDM
- **Installation:** Both vertical and horizontal pipelines are allowed



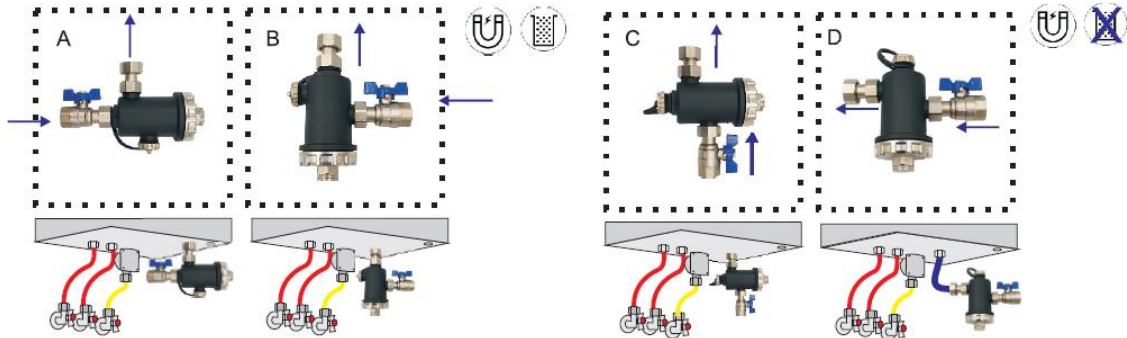
DIMENSIONS AND CONSTRUCTION



1. Separable Body
2. Brass Cap and Magnetic Sleeve
3. Spanner
4. Stainless Steel mesh filter
5. Neodymium Magnet
6. 7. 8. Rubber
9. Vent Stop End
10. Band
11. Nut
12. Union Tail
13. Ball Valve – Connection to the system

MOUNTING RECOMMENDATIONS

The filter unit should be installed under the boiler on the return of the water. Select the correct filter setting (location A and B are recommended as the best ones) Water connections $\frac{3}{4}$ ".



IMPORTANT: Before checking, cleaning or servicing the unit, turn off the boiler, close the ball valves before separating the contaminants and wait for all parts to cool down.

INSTALACION

The filter unit can be installed horizontally or vertically thanks to the special design of the T-shaped body. The contaminant separator provides excellent filtration. Maintenance and cleaning of the filter can be carried during the normal operation of the system.

The device should be installed on the return of the boiler.

The first cleaning is performing in a month after the first installation. Then the further cleaning can be carried twice a year when the heating system is switched.

The cleaning circles must be adapted to the system specifications.

INSPECTION, CLEANING AND MAINTENANCE METHOD

1. Turn off the boiler, close all the valves on the boiler system.
2. Wait the water to be cooling.
3. Remove the magnet from the filter socket. (Cleaning the magnet by removing all the contaminants and magnetic deposits had been fallen down into the filter container)
4. Then open the drain valve by rotating its lever.
5. Wait a few seconds and then slightly open the shut- off valve to allow the water to flow and flush out the jams.
6. Then close the shut –off valve again.
7. Let the water flush and clean the filter to remove deposits and dirties.
8. Before reassembling, lubricate the O ring with silicone grease.
9. Install the filter unit after cleaning.
10. Put the magnet bar into in the slot and twist it.

CAUTION



WARNING:

- 1.The filter unit contains powerful magnets, must be get away from all electronic devices, bank card and other magnetic devices.
- 2.The filter unit contains powerful magnets and should always be used with caution of the people fitted with a pacemaker.
- 3.The filter unit is a pressurized device which must be depressurized before maintenance.
- 4.The filter unit may be very hot during operation.

SOLLAU s.r.o.

Hřivínův Újezd 212,763 07 Velký Orechov,Czech Republic.

info@sollau.cz www.sollau.com

Tel:+420 576 013 873